

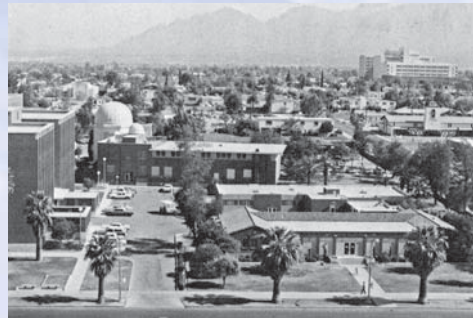
WHERE WE'VE BEEN

THE UNIVERSITY OF ARIZONA **CAMPUS HEALTH SERVICE**

100 YEARS of quality care
1918-2018



1919 Infirmary in the Schweitzer Building
(Site of Current Science & Engineering Library)



1974 Student Health Center
(Aerial View, UA Mall)



1936 Infirmary on the UA Mall
(NW Corner of University & Cherry Ave.)



1995 Campus Health Service
(New Building Addition, UA Mall)



1951 Infirmary on the UA Mall
(NW Corner of University & Cherry Ave.)



2018 Highland Commons Building
(NW of 6th St. & Highland)



1968 Student Health Center on the UA Mall
(NW Corner of University & Cherry Ave.)

Some photos courtesy of Special Collections, The University of Arizona Libraries, Tucson, AZ



**CAMPUS
HEALTH**